

# HD Suspension Clamp Instructions

## INSTALLATION

ADSS Dielectric Suspension Clamps can be used in tangent suspensions up to 325 ft. with angles less than 20°

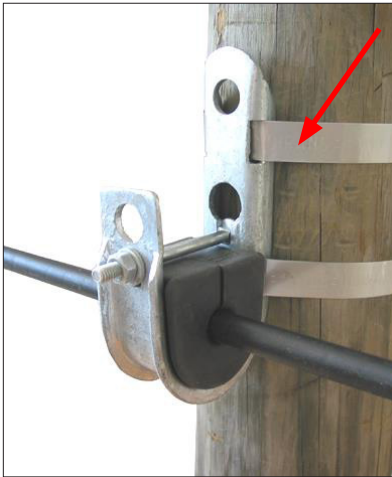
## MATERIAL

**BODY: Galvanized Steel**

**INSERT: UV Protected Neoprene Sleeve**

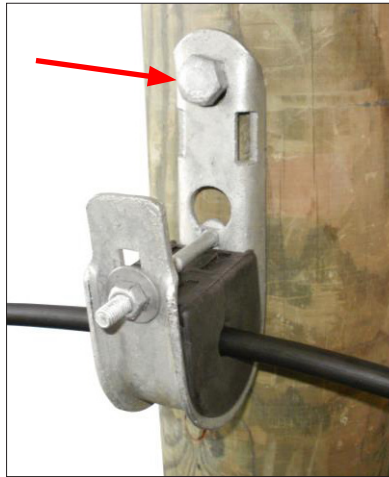
The Hubbell ADSS Dielectric Suspension Clamps may be installed with a J-hook, through bolt or by banding directly to the pole.

### INSTALLATION ON THE POLES:



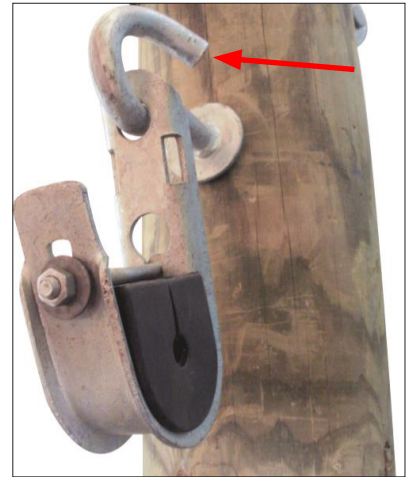
#### POLE BANDING:

In this case, the suspension clamps are directly secured to the pole using pole banding at all intermediate poles \*with angles less than 20° and perpendicular to the cable route.



#### THROUGH BOLT:

In this case, the suspension clamps are directly secured to the pole using a through bolt at all intermediate poles \*with angles less than 20° and perpendicular to the cable route.



#### J-HOOK:

In this case, the suspension clamps are directly secured to the pole using a J-hook at all intermediate poles \*with angles less than 20° and perpendicular to the cable route.

### RUNNING OUT AND TENSIONING THE CABLE:

**STEP 1:** Deadend the cable at the first end pole.

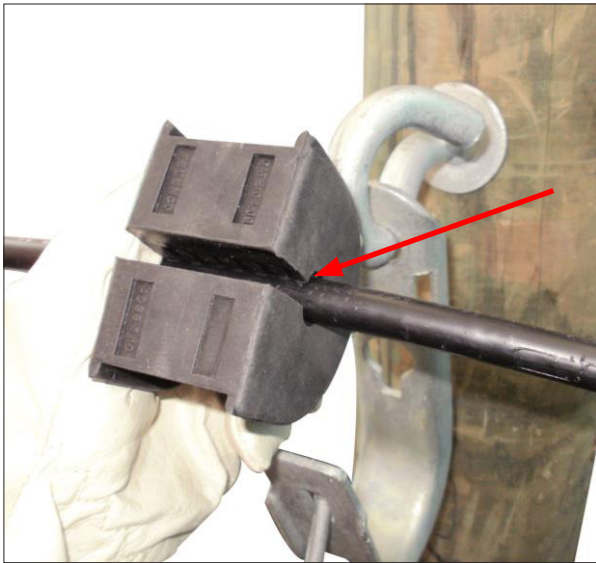
**STEP 2:** The shape of the clamp body, absent of the neoprene sleeve and the bolt, allows for the use of pull-throughs. Run out the cable using this method or by using temporary run-outs according to preference.

**STEP 3:** Run the cable according to preference to the last end pole and tension the cable to its full installation load using a cable grip, winch, and a dynamometer.

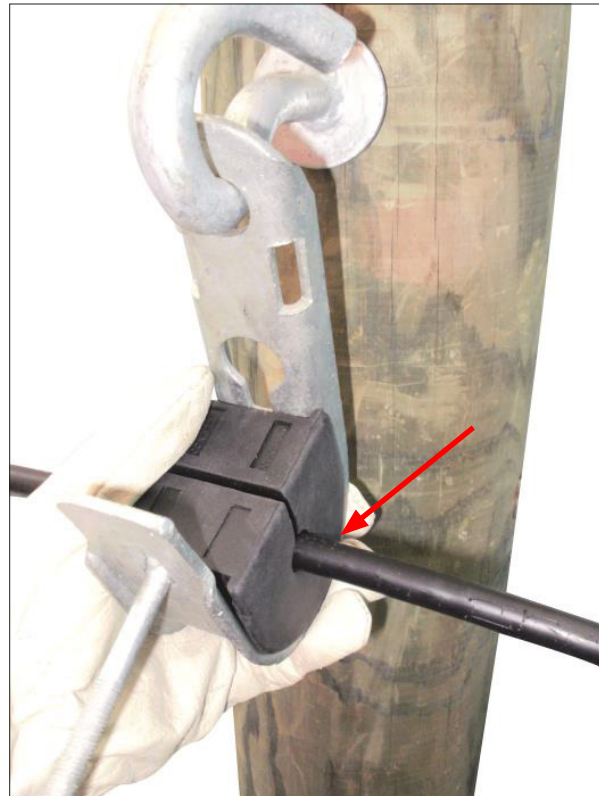
\*Now you are ready to install the cable into the Hubbell ADSS suspension clamps.



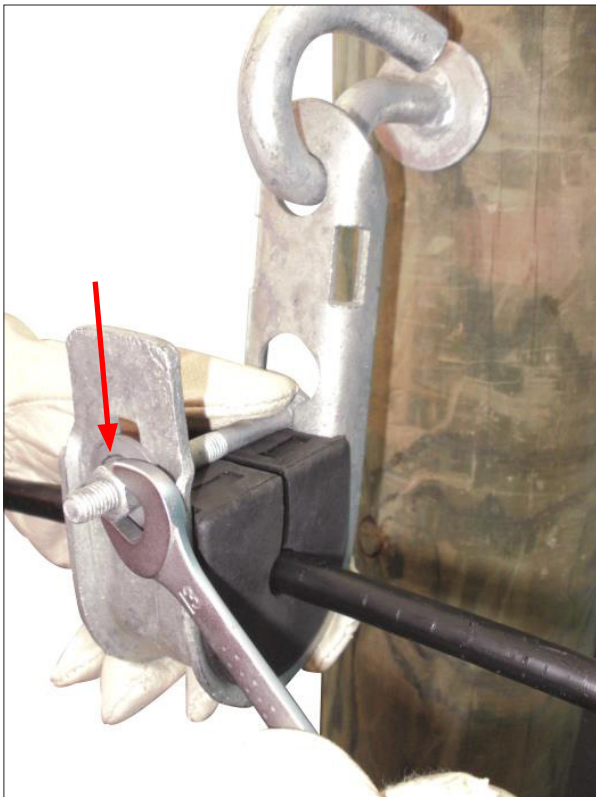
*Hubbell has a policy of continuous product improvement. Please visit [hubbellpowersystems.com](http://hubbellpowersystems.com) to confirm current design specifications*



**STEP 4:** At all intermediate poles, remove the cable from the clamp body. Install a neoprene insert around the cable for extra protection against abrasion and wind induced vibrations.



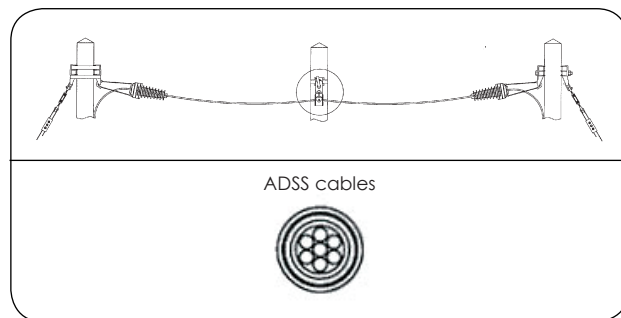
**STEP 5:** Place the cable inside the neoprene sleeve back into the clamp body.



**STEP 6:** Put the holding bolt back into place and tighten the nut to approximately 60 in-lbs (5 ft-lbs.).

PART NUMBER	CABLE DIAMETER RANGE			
	MIN (IN.)	MAX (IN.)	MIN (MM.)	MAX (MM.)
ASCF102	0.394	0.591	10.0	15.0
ASCF114	0.591	0.787	15.0	20.0

For angles greater than 20°, double deadend or false deadend.



Hubbell has a policy of continuous product improvement. Please visit [hubbellpowersystems.com](http://hubbellpowersystems.com) to confirm current design specifications